



— Est. 1944 —

**BREMERTON COMMUNITY THEATRE**

PRESENTS

*in the Robert Montgomery Auditorium*

# JESUS CHRIST SUPERSTAR

LYRICS BY **TIM RICE** AND MUSIC BY **ANDREW LLOYD WEBBER**



**April 4–May 4, 2025**

*Fridays & Saturdays at 7:30PM*

*Sundays at 2:30PM*

599 LEBO BLVD, BREMERTON, WA 98383

BOXOFFICE@BCTSHOWS.COM · WWW.BCTSHOWS.COM



BREMERTON COMMUNITY THEATRE  
PRESENTS

# JESUS CHRIST SUPERSTAR

LYRICS BY

TIM RICE

MUSIC BY

ANDREW LLOYD WEBBER

Featuring

ERIC SPENCER ERIK LAWRENCE HARLEY LAMPKIN

MAIAH CAMPBELL SKYE CAMPBELL DAN ENGELHARD

KYLE CLEARWATER ISAAC HAMMERS KEVIN MATTHEW  
DARCY ALBAN KATHERINE DONOHUE SASHA JONES

CLARA JORDAN EMILY KASPER RICHARD MOZINGO WALLACE ROSS  
PETE SIMPSON DANIEL SMITH CHRIS TALLON RANA TERESA TAN  
AMAYA VINCENT ALYSSA WEBER

Director, Set Design  
RANA TERESA TAN

Vocal Director  
ANGELA MCDERMOTT

Choreography  
STEPHANIE CLARKE

Costume Design  
KRISTIN BRADBERRY

Lighting Design  
IAN SHAW

Asst. Lighting Designer  
DALE BORER

Seamstress  
STEPHANIE MIKOS

Sound Engineer  
KEVIN MATTHEW

Light/Sound Board Operator  
DAVID WHITEMARSH

Stage Manager  
DONNA MOZINGO

Asst. Stage Manager  
RICHARD MOZINGO

Set Build  
ERIC SPENCER RANA TERESA TAN MITCH YCAZA  
RAY DEUEL CHRIS FUNKE KEVIN MATTHEW

JESUS CHRIST SUPERSTAR is presented by arrangement with Concord  
Theatricals on behalf of The Really Useful Group.

[www.concordtheatricals.com](http://www.concordtheatricals.com)

The videotaping and/or other video or audio recording of this production  
is strictly prohibited.

---

---

## CAST

Jesus .....	<i>Eric Spencer</i>
Judas .....	<i>Erik Lawrence</i>
Mary .....	<i>Harley Lampkin</i>
Caiaphas .....	<i>Miah Campbell</i>
Pilate .....	<i>Wallace Ross</i>
Annas .....	<i>Skye Campbell</i>
Simon, Second Priest .....	<i>Kyle Clearwater</i>
Peter .....	<i>Chris Tallon</i>
Herod, Apostle .....	<i>Dan Engelhard</i>
First Priest, Apostle .....	<i>Isaak Hammers</i>
Third Priest, Apostle .....	<i>Kevin Matthew</i>
Ensemble .....	<i>Darcy Alban, Katherine Donohue, Sasha Jones, Clara Jordan, Emily Kasper, Richard Mozingo, Pete Simpson, Daniel Smith, Rana Teresa Tan, Amaya Vincent, Alyssa Weber</i>

### STANDBY

Mary .....	<i>Alena Menefee</i>
------------	----------------------

---

---

## PRODUCTION STAFF

Director .....	<i>Rana Teresa Tan</i>
Vocal Director .....	<i>Angela McDermott</i>
Choreography .....	<i>Stephanie Clarke</i>
Costume Design .....	<i>Kristin Bradberry</i>
Seamstress .....	<i>Stephanie Mikos</i>
Set Design .....	<i>Rana Teresa Tan</i>
Lighting Design .....	<i>Ian Shaw</i>
Asst. Lighting Design .....	<i>Dale Borer</i>
Sound Engineer .....	<i>Kevin Matthew</i>
Light/Sound Board Operator .....	<i>David Whitemarsh</i>
Stage Manager .....	<i>Donna Mozingo</i>
Asst. Stage Manager .....	<i>Richard Mozingo</i>
Set Builders .....	<i>Eric Spencer, Rana Teresa Tan, Mitch Ycaza, Ray Deuel, Chris Funke, Kevin Matthew</i>
Photography by Kathy Berg	



---

---

## DIRECTOR'S NOTES

*Jesus Christ Superstar* was a groundbreaking show when it first debuted in 1971 for many reasons. It is a sung-through (no spoken dialogue) rock opera focusing on the motivations and struggles of Judas Iscariot and exploring biblical themes through a modern lens, rather than a traditional, linear retelling of the New Testament's Gospels. The show was not without its controversies, as it is only loosely based on the Gospels and focuses on the personal conflicts between Jesus, his disciples, the people of Israel, and the leadership of Rome. The show has remained popular for over 50 years and is typically reimagined with a more modern aesthetic with respect to costuming, casting, and set design.

I will admit that my artistic "vision" for this show morphed as we began the production and rehearsal process, and my initial desire for monochromatic, gender-neutral costumes flexing into faded colors and styles "representative" of the time but not overtly historically accurate, similar to the set design. Sure, we could have set the show in post-apocalyptic New York with modern hairstyles, costuming, and set, but that somehow conflicted with the desire to just let the music tell the story, which will hopefully allow the audience to have their own individual experience with the show.

I am immensely grateful to the small but mighty artistic team who helped make this production a reality: Angela McDermott for smart and nurturing vocal direction, Stephanie Clarke for creative but "doable" choreography, Kevin Matthew for very detailed sound design and fly rail engineering, Ian Shaw for equally detailed lighting design, Kristen Bradberry for a very collaborative costume design process, and Dale Borer for programming over 200 light cues for the show. And I am so fortunate to have Donna Mozingo manage our stage again with her typical attention to detail and David Whitmarsh to run the light/sound board with his usual confident expertise.

*Jesus Christ Superstar* challenges audiences to think critically about the story of the Gospels and its characters, prompting reflection on faith, betrayal, and humanity. We must also acknowledge the uncomfortable, angry, and painful aspects of the telling of the last days of Jesus, which are paradoxically set to music in this show. I sincerely hope you enjoy the efforts of this hard-working cast and wonderfully talented, all-volunteer artistic team.

— **Rana Teresa Tan**



---

---

# MUSICAL NUMBERS

## ACT ONE

Overture .....	Ensemble
“Heaven on Their Minds” .....	Judas
“What’s the Buzz” .....	Jesus, Mary, Ensemble
“Strange Thing, Mystifying” .....	Jesus, Mary, Judas, Ensemble
“Everything’s Alright” .....	Mary, Judas, Jesus, Ensemble
“This Jesus Must Die” .....	Annas, Caiaphas, Priests, Ensemble
“Hosanna” .....	Caiaphas, Jesus, Ensemble
“Simon Zealotes” .....	Simon, Ensemble
“Poor Jerusalem” .....	Jesus
“Pilate’s Dream” .....	Pilate
“The Temple” .....	Jesus, Ensemble
“Everything’s Alright” (Reprise) .....	Mary, Jesus
“I Don’t Know How to Love Him” .....	Mary
“Damned for All Time/Blood Money” .....	Judas, Annas, Caiaphas, Priests, Ensemble

– A 15–Minute Intermission –

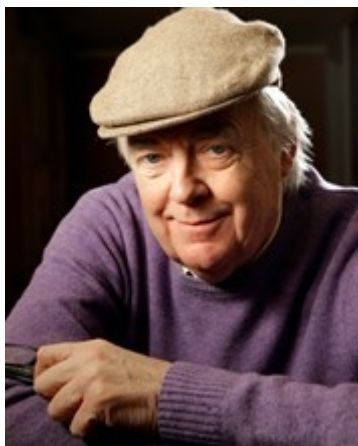
## ACT TWO

“The Last Supper” .....	Apostles, Jesus, Judas
“Gethsemane” .....	Jesus
“The Arrest” .....	Judas, Jesus, Annas, Caiaphas, Peter, Ensemble
“Peter’s Denial” .....	Maid by the Fire, Peter, Soldier, Old Man, Mary
“Pilate and Christ” .....	Pilate, Annas, Jesus
“King Herod’s Song” .....	Herod, Ensemble
“Could We Start Again Please” .....	Mary, Peter
“Judas’ Death” .....	Judas, Annas, Caiaphas, Ensemble
“Trial by Pilate/39 Lashes” .....	Pilate, Caiaphas, Annas, Jesus, Ensemble
“Superstar” .....	Judas, Soul Sisters, Angels
“The Crucifixion” .....	Jesus, Ensemble
“John 19:41” .....	Instrumental

---

---

## WHO'S WHO



**Tim Rice** has worked in music, theatre, and films since 1965, when he met Andrew Lloyd Webber, a fellow struggling songwriter. Rather than pursue Tim's ambitions to write rock or pop songs, they turned their attention to Andrew's obsession—musical theatre. Their first collaboration was based on the life of Dr. Thomas Barnardo, the Victorian philanthropist, *The Likes of Us*. Their next three works together were much more successful—*Joseph and the Amazing Technicolor Dreamcoat*, *Jesus Christ Superstar*, and *Evita*.

Tim has since worked with other distinguished popular composers such as Elton John (*The Lion King*, *Aida*), Alan Menken (*Aladdin*, *King David*, *Beauty and the Beast*), Björn Ulvaeus and Benny Andersson (*Chess*), and Stuart Brayson (*From Here to Eternity*). He has also written with Freddie Mercury, Burt Bacharach, and Rick Wakeman, among others.

Tim founded his own cricket team in 1973, which has now played over 750 matches, and was president of MCC, founded in 1789, in 2002. He crops up here and there in all branches of the media, drawing on his extensive knowledge of the history of popular music.

As an EGOT, he is one of only 17 people in the world to have won an Emmy, Grammy, Oscar, and Tony award, was knighted by HM Queen Elizabeth II in 1994, and is the proud owner of a boxer dog and two dozen chickens.

---

---

## WHO'S WHO



**Andrew Lloyd Webber** has composed the scores of some of the world's most famous musicals. From *Joseph and the Amazing Technicolor Dreamcoat* (1969) to *Cinderella* (2021), his work has been consistently seen on world stages. Before the COVID pandemic hit, Lloyd Webber had shows continually running in the West End for 48 years and on Broadway for 41. When *Sunset Boulevard* joined *School Of Rock*, *CATS*, and *The Phantom of the Opera*, he equaled Rodgers & Hammerstein's record of four shows running simultaneously

on Broadway. He is one of the select group of artists with EGOT status, having received Emmy, Grammy, Oscar, and Tony Awards.

Lloyd Webber owns seven London theatres, including the iconic London Palladium and Theatre Royal, Drury Lane. Over the past three years, the latter has been completely restored and renovated at a cost of over £60 million. It is one of the biggest projects ever undertaken by a private theatre owner in recent times. His mantra that every penny of profit made from his theatres is ploughed back into the buildings has meant that considerable work has been undertaken across his theatre portfolio during the pandemic, including the complete remodelling and reseatting of the Gillian Lynne.

Lloyd Webber is passionate about the importance of musical education and diversity in the arts. The Andrew Lloyd Webber Foundation provides 30 performing arts scholarships every year for talented students with financial need and supports a range of projects such as the Music In Secondary School Trust and commissioning research into diversity in theatre.

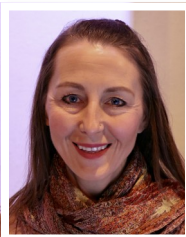
Andrew Lloyd Webber was knighted in 1992 and created an honorary life peer in 1997. To mark his 70th birthday, his bestselling autobiography *Unmasked* was published by Harper Collins in March 2018.



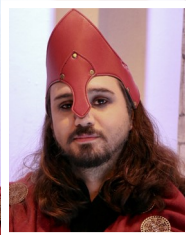
---

---

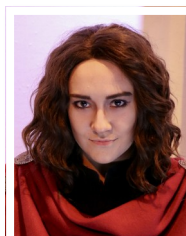
## WHO'S WHO



**Darcy Alban** (*Ensemble*) is making her Bremerton Community Theater debut in *Jesus Christ Superstar* and her first theater performance in 18 years. The gap has been filled with raising a family, teaching yoga, and working as a social worker. She is thrilled and grateful to be back and thanks her beautiful family for their love, encouragement, and support.



**Miah Thoreau Campbell** (*Caiaphas*)(they/them) is excited to return to the stage, having previously appeared as Harry (*The Picture of Dorian Gray*), The Creature (*Frankenstein*), Christopher Wren (*The Mousetrap*), Frank-N-Furter (*The Rocky Horror Show*), Wadsworth (*Clue: On Stage*), and Happy Lowman (*Death of a Salesman*). They are also a passable piano player, sketch artist, and occasional director.



**Skye Campbell** (*Annas, Ensemble*) (they/them) is stoked to be appearing onstage at BCT again! Some of their previous roles have included the “practically perfect” *Mary Poppins*, Jo March (*Little Women*), Magenta (*The Rocky Horror Show*), the Baker's Wife (*Into the Woods*), and Fleet/Hartley (*Titanic*). Most recently they portrayed Abigail Williams in KFT's production of *The Crucible*. Skye is also a director and composer, having written scores for several projects.



**Kyle Clearwater** (*Simon, Priest*) is very excited to be returning to the BCT stage. His most recent appearance was as Robertson Aye in *Mary Poppins*. Some of his favorite past roles include Kenickie in *Grease* and the Baker in *Into the Woods*. Thank you to Rana for the opportunity to perform with such a biblically righteous cast (insert epic guitar solo).

---

---

## WHO'S WHO



**Katherine Donohue** (*Ensemble*) is a talented young actor, dancer, and vocalist who is excited to be joining us for her third show at BCT. Katherine was previously seen as Nancy in the BCTjr production of *Oliver! Jr* as well as Octo the Octopus in *The Little Mermaid*.



**Dan Engelhard** (*Herod, Apostle*) is appearing in his 14th BCT main stage musical going back 28 years, starting with *A Day in Hollywood / A Night in the Ukraine*. Other favorite BCT roles include Captain Smith in *Titanic*, Juan Peron in *Evita*, Richard Henry Lee in *1776*, Nanki-Poo in *The Mikado*, and Archibald Craven in *The Secret Garden*. He appreciates his wife Leslie's support and encouragement.



**Isaak Hammers** (*Priest, Apostle*) is excited to be back in a BCT musical! Past BCT shows include *Evita*, *Into the Woods*, *Urinetown*, *Curtains*, and *Company*. Two favorite roles have been Brad Majors in *The Rocky Horror Show* at Bremerton's Admiral Theater and Drosselmeyer in *The Nutcracker*. Thank you for supporting local theater!



**Sasha Jones** (*Ensemble*) is happy to return to the stage after a twenty-year absence. Previous roles include Wally in *The 1940s Radio Hour* and Frenchie in *Grease*. While enjoying her role in the ensemble, her favorite role is mama to a three-year-old boy. She'd like to thank her family for supporting her return to the stage.

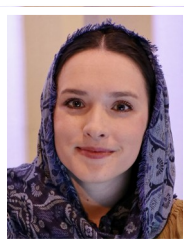
---

---

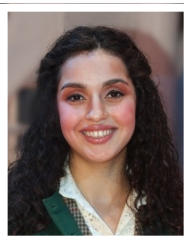
## WHO'S WHO



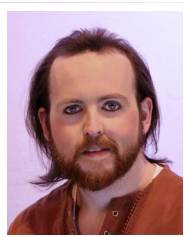
**Clara Jordan** (*Ensemble*) has been performing in musical theater for ten years. You may have seen her as Kate Mullins in *Titanic* here at BCT. Theater has always been such an important part of her life, and she is so excited to be involved in another production at BCT. Enjoy the show!!



**Emily Kasper** (*Ensemble*) is excited to make her BCT debut! Favorite roles include Tzeitel in *Fiddler on the Roof* and Lorraine in *All Shook Up*. When she isn't on stage, she is teaching English at Olympic College and polar plunging in Puget Sound. She would like to thank Peter and Kiki for their love and support.



**Harley Lampkin** (*Mary*) is from Tracy, California, and earned her Vocal Performance degree from the University of the Pacific. She lived in Chicago, where jazz and R&B musicians inspired her to release original music, and in East Germany, where she performed benefit concerts and collaborated with local musicians. Last year, she played Katie McGowan in BCT's *Titanic* and now performs at various local venues around Kitsap. Big thanks to Gaby, Mom, and Dad!



**Erik Lawrence** (*Judas*) has been performing in the Kitsap area since 2019. This is his third musical at BCT, his first being *Something Rotten!* in 2022, followed by *Titanic* last season. Other recent shows include LKP's *Trail to Oregon* and WWCA's *Spamalot*. When not on stage, he writes and performs original music, does lighting work for various theaters, and enjoys spending time with his family and his cats.



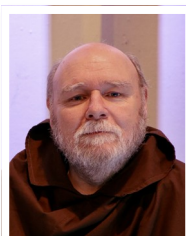
---

---

## WHO'S WHO



**Kevin Matthew** (*Priest, Apostle*) couldn't resist the urge to step back on stage to help present this work and this music from his generation. He was last seen on the BCT stage as Mr. Banks in *Mary Poppins*. His previous favorite roles include Emile De Becque, Koko, Pirate King, Sweeney Todd, Archie Craven, and Cervantes. Thanks to all for letting him come out from behind his tech curtain.



**Richard Mozingo** (*Asst. Stage Manager, Apostle*) has appeared in many BCT shows including *The Diary of Anne Frank* as Mr. Dussel, *Murder on the Orient Express* as the bartender, and *12 Angry Men* as Juror #6. He has wrangled many a cat as a feline fancier and is now helping Donna—as her assistant—do the same with the cast.



**Wallace Ross** (*Pilate*) has dabbled in theaters across Kitsap County for 31 years and is ecstatic to be given the chance to play this bucket list role. His recent shows include *Titanic*, *The Addams Family*, *Baskerville*, and *Jekyll & Hyde*. He directed *Lantern in the Wind* in BCT's RBS hall last summer and will direct *Perfect Crime* on our mainstage next season! He is a retired English teacher and is grateful for the sanity of his ever-patient wife Julie.



**Pete Simpson** (*Apostle, Ensemble*) is in his fifth appearance on the BCT stage and has been involved with other Kitsap theater productions through the years. He is grateful to the production crew and dedicated cast and hopes you find meaningful inspiration through the music and telling of this story.

---

---

## WHO'S WHO



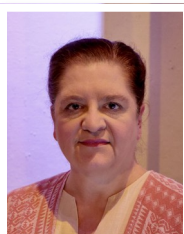
**Daniel Smith** (*Apostle, Ensemble*) notes that this show originally opened on Broadway four months before Daniel was born, so it's been with him since his first "Wah!". Daniel was recently seen in *Titanic* at BCT last year, and *Faust* with the Kitsap Opera in 2022. When not designing tech, his family endure Daniel having fun with telephones, clocks, cars, and still going "Wah!" on stage.



**Eric Spencer** (*Jesus*) is appearing in his 22nd show at Bremerton Community Theatre. Favorite past roles include Thomas Andrews in *Titanic*, Felix Unger in *The Odd Couple*, Willy Loman in *Death of a Salesman*, Quasimodo in *The Hunchback of Notre Dame* and Che in *Evita*. He is a graduate of the American Musical and Dramatic Academy in New York and serves on BCT's Board of Trustees. Eric works at Canterbury Manor in Bremerton.



**Chris Tallon** (*Peter*) grew up in Kitsap County and began his acting career many years ago as an orphan in *Oliver!* with Bainbridge Performing Arts. He performed with the NKHS drama department in many musicals and plays and has been part of multiple choirs, including Vestre Sund Mannskor and the Poulsbo First Lutheran church choir. He is grateful for the support of his beautiful wife, and their three amazing children.



**Rana Teresa Tan** (*Director, Set Design, Ensemble*) started as an actor at BCT in 1999 and has designed sets for nearly 50 shows, including *Titanic*, *Something Rotten!*, *Mary Poppins*, *Evita*, and *The Hunchback of Notre Dame*. *Jesus Christ Superstar* marks her 42nd show as director at BCT—whew! She serves as a board member of both BCT and the Kitsap Humane Society. When not covered with sawdust and paint in the BCT set shop, Rana works as a remote advisory physician and enjoys fostering kittens.

---

---

## WHO'S WHO



**Amaya Vincent** (*Ensemble*) is thrilled to return to the stage after a long hiatus from musical theater. Having last performed in high school, she is excited to make her BCT debut in *Jesus Christ Superstar*, a show she has loved since childhood. She thanks her family and friends for their support and hopes you enjoy the show!



**Alyssa Weber** (*Ensemble*) (she/her) is happiest when singing and dancing, especially on stage, and is thrilled to be performing once again at BCT! When not working as a clinical laboratory manager, she enjoys music, dance, and occasionally flexing her word nerd skills with improv acting. Alyssa thanks her family for their continued support of her passions.



**Alena Menefee** (*Mary, standby*) grew up in Kitsap County theaters and remembers fondly her first shows at BCT. From a sold-out run of *The King and I* at age 8, to the title role in *Sugar* at age 21, BCT was a home and family to Alena. While playing Mary Magdalene at BCT 21 years ago, "I lost my voice and a friend sang for me offstage. It's just too perfect that I get to help out tonight!"





---

---

## WHO'S WHO

**Stephanie Clarke** (*Choreographer*) is a co-owner and instructor at Northwest School of Dance as well as Director of the studio's competition dance team Clarke Dance Group. She has been teaching and choreographing dance for over 20 years. Stephanie has choreographed several musicals at BCT including *Fiddler on the Roof*, *Hunchback of Notre Dame*, *Shout! The Mod Musical*, *Something Rotten!* and *Mary Poppins*.

**Angela McDermott** (*Vocal Director*) is incredibly excited to make her BCT debut in vocal directing this fabulous show! Previous favorite vocal direction credits include *Ride the Cyclone* (LKP), *Jekyll & Hyde*, and *Footloose* (WWCA). Angela received her BFA in Musical Theatre in 2012 and has loved working with local theaters directing, vocal directing, and performing. Enjoy the show!

**Ian Shaw** (*Lighting Design*) has been lighting shows at BCT since the 1990 production of *Anything Goes* (as a spotlight operator). He eventually settled into the lighting design/master electrician role(s) and estimates he has provided lighting design for over 50 shows at BCT. His most recent productions include *Shout! The Mod Musical* and *The Hunchback of Notre Dame*.

---

---

## IN MEMORIAM



The Kitsap Theatre community is saddened at the March 5th passing of Carl Miller. Carl was a cherished member of the Bremerton Community Theatre family, whose passion for the performing arts and dedication to his community left an indelible mark.

As an actor, Carl brought characters to life with depth and authenticity, captivating audiences and inspiring fellow performers. His talent and commitment to the craft were evident in every role he undertook, from heartfelt dramas such as *12 Angry Men*, to musicals like *Beauty and the Beast* or the musical revue *My Way*. He shall be missed.



Nicole Bird as Belle and Carl Miller as Maurice in the 2018 production of *Beauty and the Beast*.

# BREMERTON COMMUNITY THEATRE DONORS

We gratefully acknowledge the support of the following individuals and/or entities, which have contributed to Bremerton Community Theatre in support of our mission to promote, advance and encourage the art and education of the theatre.

This list includes donors to the General Fund, Carpet Replacement Fund, and the Lighting Upgrade Fund between January 1, 2024 and March 31, 2025. We greatly appreciate all our supporters. Please note that donations received through the Kitsap Great Give are not included on this list. For any corrections, please contact the Editor, Andy Jordan, at [boxoffice@bctshows.com](mailto:boxoffice@bctshows.com) or 360.373.5152.

---

## **\$1000 to \$2499**

Anonymous  
The Peet Family  
Giving Fund  
Victoria Groce

## **\$500 to \$999**

Anonymous  
Caroline Ventrice  
Kitsap Community  
Foundation

## **\$100 to \$499**

American Online  
Giving Foundation  
Connie Baker  
Jeffrey Cox  
Maggie Golden  
Larry & Mary Hoback  
Trish Kamps  
Eileen Mitchell  
Frank & Loretta Nelson  
Robert Pilon  
Sheila Smith  
Cynthia Shoemaker  
The Kroger Company

## **Up to \$99**

Sasha Alamano  
Donna Altig  
John Andrews  
Kimberly Austin-Ellis  
Doris Baxter  
Caitlin Barrett  
Alec Bellis  
Melody Benton  
Michael Blaz  
Teresa Brewster  
Alice Brown  
AnnieLaurie Burke  
Bonnie Chrey

Lillian Crawford  
Tineke Dahl  
Tamy Deam  
Richard Doggett  
William Donahue  
Lizbeth Doving  
Mary Eyer  
Henry Fishel  
Adele Freeland  
Michael Freiman  
Marie Frey  
Jen Fuji  
Alise Fulton  
Joe & Rande Gjerstad  
Mark Gowin  
Joseph Gray  
Cynthia Grossglass  
Susan Hall  
Lee Anne Houk  
Peggy Iversen  
Margaret Johnston  
Joel Kullberg  
Michael Jantzi  
Joanne Jenks  
Demaris JohaneK  
Janet John  
Dragan Karadzic  
Suzanne Klorig  
Shirley Knight  
Larry & Arletha Kralicek  
Timothy Lamas  
Heather Lawton  
Dorothea Lintz  
Kathy Lockwood  
Burdette Lott  
Donna Love  
Mary Elaine Lyle  
Danielle Maclean  
Lisa Mapes  
Susan Marett

Greg Martin  
Cindy Martinson  
Laura McCartney  
Heather McKnight  
Nikole Mercer  
Stephanie Mikos  
William Morton  
Eric Mullen  
Patricia Garcia Mulligan  
Katherine Myers  
Carl & Bobbette Olson  
Nancy Orsborn  
Denise Peet  
Merry Quy  
Barbara Poor  
Pamela Ragan  
Robin Richardson  
Jacie Rivas  
Loretta Roossien  
Karen Rowley  
Kathleen Solas  
Judith Soto  
Beverly Stark  
Ryan Stewart  
John Surette  
Linae Tabor  
Sharon Tankersley  
Nancy Thayer  
Tammy Lee Titus  
Jan Wainscott  
Jim Washington  
Karen Woodward  
Melody Yamanaka

# BCT BOARD OF DIRECTORS

## OFFICERS

PRESIDENT \_\_\_\_\_ DONNA MOZINGO  
VICE PRESIDENT \_\_\_\_\_ DAN ENGELHARD  
SECRETARY \_\_\_\_\_ WALLACE ROSS  
TREASURER \_\_\_\_\_ GARY FETTERPLACE

## GOVERNING MEMBERS

PRODUCTION COORDINATOR \_\_\_\_\_ RANA TAN  
AT LARGE (VOLUNTEER COORDINATOR) \_\_\_\_\_ TA'MARA BALE  
AT LARGE (FRONT OF HOUSE COORDINATOR) \_\_\_\_\_ MJ JORDAN  
AT LARGE (COSTUMES & PROPERTIES) \_\_\_\_\_ KRISTI ANN JACOBSON  
AT LARGE (FACILITIES & GROUNDS) \_\_\_\_\_ ERIC SPENCER  
AT LARGE (TECHNICAL DIRECTOR) \_\_\_\_\_ KEVIN MATTHEW

## BCT VOLUNTEER STAFF

BUSINESS MANAGER \_\_\_\_\_ MJ Jordan

BOX OFFICE STAFF \_\_\_\_\_ Dave Payne, Teresa Haigh-Braget,  
\_\_\_\_\_ Catherine Bennett, Jen DeGroot, Ta'Mara Bale, MJ Jordan, Andy Jordan

SHOWTIME HOUSE MANAGERS \_\_\_\_\_ Barbara Miller, Kelvin Jones,  
Donna Mozingo, Wallace Ross, Dan Engelhard, Gary Fetterplace,  
Kevin Matthew, Dale Borer, Jeffrey Bassett, Ta'Mara Bale, MJ Jordan

HOSPITALITY \_\_\_\_\_ Patty Swan, Jeffrey Bassett, Catherine Bennett,  
Dale Borer, Beverly Carlson, Kim Carpenter, Amiee Cook, The DeGroot Family,  
Abby Dickson, Merissa Eckman, Dan Estes, The Fischer Family, Kristin Guy,  
Selah Guy, Isaak Hammers, Michael Hanenburg, Alyssa Hersey, Renae Hill,  
Mark Jackson, Linda Jensen, Travis Johnson, Andy & MJ Jordan, Sherry Knox,  
Caleb Lizon, Kelli McAuley, Terry McAuley, Stephanie Mikos, OHS Key Club,  
Imani Owens-Bailey, Julie Ross, Eric Spencer, Jeff Stein, Rana Tan,  
Scott & Christine Usher, Alyssa Weber, Trina Williamson, Micha Winning, Eric Wise

BARTENDERS \_\_\_\_\_ Leslie Noble, Kelvin Jones, Adrian DeGroot, Matt Haver,  
Jeffrey Bassett, Stephanie Mikos, Ta'Mara Bale, Andy Jordan

THEATRE RENTAL \_\_\_\_\_ Rana Tan

GRAPHIC DESIGN/WEBMASTER \_\_\_\_\_ Andy Jordan





BREMERTON  
COMMUNITY  
THEATRE

599 Lebo Blvd Bremerton, WA 98303

SEASON  
2025-2026 **82**

Our new season is...

To **DIE** For

Sep. 5-28, 2025

The  
**LIAR**

Oct. 10-19, 2025

**LEADING  
LADIES**

Oct. 31-Nov. 23, 2025

THE  
**HUMANS**

Feb. 6-Mar. 1, 2026

**MAMMA  
MIA!**

Apr. 3-May 3, 2026

**OLD  
RINGERS**

May 15-24, 2026

PERFECT



**CRIME\***

June 5-28, 2026

\*pending licensing

Additional productions include...

BCTjr's  
*Beauty  
and the  
Beast*

Jul. 18-20, 2025

THE  
**New Directors  
SHOWCASE**

Jan. 9-11, 2026

BCTjr's  
A  
*CHRISTMAS  
Cinderella*



Dec. 12-14, 2025